



<b>EAN:</b>	4013288205643	<b>Size:</b>	335x110x65 mm
<b>Part number:</b>	05130110001	<b>Weight:</b>	1126 g
<b>Article number:</b>	Click-Torque A 6 Set 1	<b>Country of origin:</b>	TW
		<b>Customs tariff number:</b>	82041100

- Easy setting and saving of the desired torque value with audible and tactile click when the scale value is reached (click 1)
- Safely quantified force: when the set value is reached, the torque wrench triggers audibly and noticeably (click 2)
- Precision of  $\pm 34\%$  as per DIN EN ISO 6789-1:2017-07.
- Set including socket adapter and extension
- Robust surface-protecting, compact, textile box

Click torque wrench in the unmistakable Wera design. Very robust design with high accuracy as per DIN EN ISO 6789-1: 2017-07. Easy setting and saving of the default value. The audible and tactile clicks on reaching the scale values facilitate the safe setting of the desired torque value. The robust release mechanism guarantees a clearly audible and tactile release signal when the set torque is reached. Provides clockwise torque-control and 45-tooth ratchet mechanism. The Wera click torque wrench is accompanied with various accessories in a compact set arrangement. Included are: Click-Torque A 6 1/4" from 2.5 to 25 Nm, 6 sockets with 1/4" drive, 11 Hex-Plus hexagon bits, Phillips head bits and TORX® bits, plus an extension and socket adaptor.



**Web link**  
<https://www.wera.de/en/05130110001>

Wera - Click-Torque A 6 Set 1  
 05130110001 - 4013288205643

Wera Werkzeuge GmbH  
 Korzter Straße 21-25  
 D-42349 Wuppertal  
 Tel: +49 (0)2 02 / 40 45-0  
 E-Mail: info@wera.de

Click-Torque Wrench series

Click-Torque A 6

Exact



Click Torque wrench set 1/4" with double click.



We wanted working with torque wrenches to be simple and accurate which is why we developed the Click-Torque wrenches. With the ability to set and save the default values and with the unmistakable, robust Wera design, these torque wrenches are the ideal tools for all bolting applications that require torque-controlled tightening (clockwise torque wrenches) and tightening and loosening (torque wrenches for insert tools).

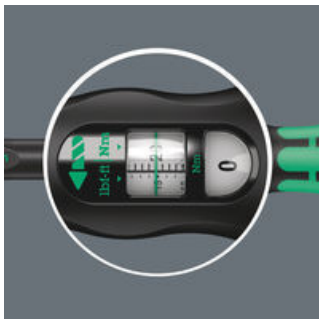


With 1/4" hex drive.



Precision of  $\pm 4\%$  as per DIN EN ISO 6789-1:2017-07.

Easy and safe



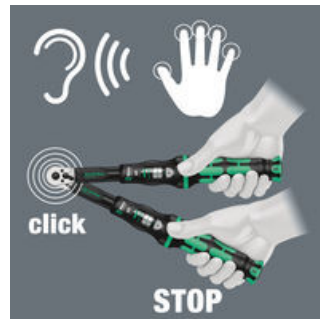
Easy setting and saving of the desired torque value; easy to read on main and fine scales.

Setting with Speed



With audible and tactile locking when the scale values are reached.

Release mechanism



On reaching the desired torque value, an audible and tactile mechanism is triggered.

Manual and machine sockets



The manual and machine sockets can be used both for hand and power tools use (non-impact). Users need just one socket set for all applications.

Web link


<https://www.wera.de/en/05130110001>

Wera - Click-Torque A 6 Set 1  
05130110001 - 4013288205643


Wera Werkzeuge GmbH  
Korzter Straße 21-25  
D-42349 Wuppertal  
Tel: +49 (0)2 02 / 40 45-0  
E-Mail: [info@wera.de](mailto:info@wera.de)

Set contents:

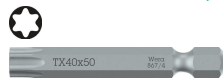
Click-Torque A 6 torque wrench with reversible ratchet, 2.5-25 Nm, 1/4" x 2.5-25 Nm

 05075605001 1x 1/4" x 2.5-25 Nm


851/4 TZ bits, PH 2 x 50 mm

 05059810001 1x PH 2 x 50 mm


867/4 Z TORX® bits, TX 15 x 50 mm

 05060133001 1x TX 15 x 50 mm  
 05060134001 1x TX 20 x 50 mm  
 05060135001 1x TX 25 x 50 mm  
 05060136001 1x TX 27 x 50 mm  
 05060137001 1x TX 30 x 50 mm  
 05060138001<sup>1)</sup> 1x TX 40 x 50 mm  
 1) Hexagonal blade


840/4 Z bits, 3 x 50 mm

 05059605001 1x 3 x 50 mm  
 05059610001 1x 4 x 50 mm  
 05059615001 1x 5 x 50 mm  
 05059620001<sup>1)</sup> 1x 6 x 50 mm  
 1) Hexagonal blade


870/1 Adaptor, 1/4" x 25 mm

 05136000001<sup>1)</sup> 1x 1/4" x 25 mm  
 1) With friction ball; for manual nut spinner sockets


8794 SA Zyklus extension with free-turning sleeve, short, 1/4", 1/4" x 75 mm

 05003525001 1x 1/4" x 75 mm

8790 HMA Zyklus 1/4" socket, 6 x 23 mm

 05003505001 1x 6 x 23 mm  
 05003506001 1x 7 x 23 mm  
 05003507001 1x 8 x 23 mm  
 05003509001 1x 10 x 23 mm  
 05003511001 1x 12 x 23 mm  
 05003512001 1x 13 x 23 mm

Hook and Loop Fastener Strip 240, 50 x 240 mm

 1x 50 x 240 mm

Web link

<https://www.wera.de/en/05130110001>

Wera - Click-Torque A 6 Set 1  
 05130110001 - 4013288205643

Wera Werkzeuge GmbH  
 Korzter Straße 21-25  
 D-42349 Wuppertal  
 Tel: +49 (0)2 02 / 40 45-0  
 E-Mail: info@wera.de